



Thank you for purchasing Candoopro! Please read the following information before using the system for the first time. If you have any questions about the use of the system, please contact us at Sales@candoopro.com, or visit our Forum at <http://forums.candoopro.com/>.

Quick Start Guide – Suzuki Outboard Engines

Hardware and Cable Guide; what's included:

NOTE: If you ordered Suzuki capability as an add-on to an existing Marine version of Candoopro, you will only receive the appropriate cable to connect the Marine Main Diagnostic Cable to the Suzuki engine.

The Candoopro system setup for Suzuki includes the following parts:

The Vehicle Diagnostic System Box, which connects between your PC and the Outboard Engine



The USB Cable, which connects the Vehicle Diagnostic System Box to the PC:



The Marine Main diagnostic cable, which connects to the Vehicle Diagnostic System Box and to the Suzuki Diagnostic Adapter Cables:



The Suzuki Diagnostic Adapter Cable for Early engines (2007 and older) , which attaches between the Marine Main Cable and the Suzuki Engine Diagnostic Connector on the early outboards:



The Suzuki Diagnostic Adapter Cable for Late engines (2008 and newer) , which attaches between the Marine Main Cable and the Suzuki Engine Diagnostic Connector on the late outboards:

NOTE: The Suzuki and Honda cables have the same connector style, but the Suzuki version has BLACK overmolding!



The Marine Main diagnostic cable is fastened to the Suzuki Diagnostic Adapter cables by carefully aligning the slot of the connected to the mating slot, then screwed hand tight



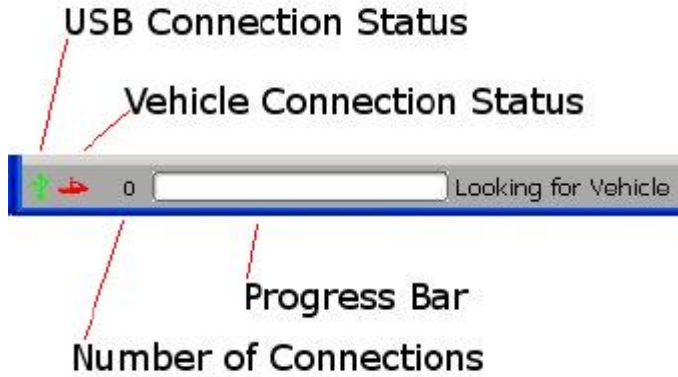
Getting Started- Loading Software and Starting up the Program:

First Time: (Internet Connection is REQUIRED)

- Install USB Drivers, by entering the following into your web browser
 - <http://www.candopro.com/candoinstall/driver/usbdriver.exe>
- Connect CANDoo Professional System to the PC with the provided USB Cable
- Install CANDoo Professional Software, by entering the following into your web browser
 - <http://www.candopro.com/candoinstall/CanDooPro.msi>
- Start CANDoo Professional by going to start menu and launching CANDoo Professional
 - When prompted to download the new update, you must select “YES”

Each Use: (Internet Connection is Optional)

- Connect CANDoo Professional System to the PC with the provided USB Cable
- Start CANDoo Professional by going to start menu and launching CANDoo Professional
- If you have a multi-brand version of software , select Suzuki
- Bottom left of the CANDoo Professional software shows the current status



- Connect the Candoo pro system to the Suzuki engine diagnostic connector.

Connecting to Suzuki Outboard Engines:

NOTE: Before connecting to the vehicle, please read the service manual for the particular model of Outboard Engine!

In general, starting a diagnostic session involves two steps:

1. Connecting the Candoo pro system to the outboard diagnostic connector
2. "Waking up" the engine ECU to enable the Candoo pro system to talk to the ECU

Connecting the Diagnostic Cable to the Outboard Engine:

Suzuki Outboards have two different diagnostic connectors, the early engines 2007 and older use a large round connector, and the 2008 and newer engines use a small 4 pin square connector. Both are usually covered with a rubber protective cap. **Steps to connect:**

1. Locate the diagnostic connector. The location of the connector varies by engine, the early engines sometimes have the connector up high on the starboard side, but later series have the connector in the rear starboard side.

Example of the Early style Diagnostic connector:



Example of the Late style Diagnostic connector:



2. Remove the rubber protective cover on the connector, and plug the Candoopro Suzuki adapter cable connector into the mating connector on the engine.
3. You are now ready to “wake up” the ECU and start a diagnostic session.

Waking up the ECU:

In order to initiate a diagnostic session, you need to “wake up” or turn on the ECU. This is done by turning on the ignition switch of the boat.

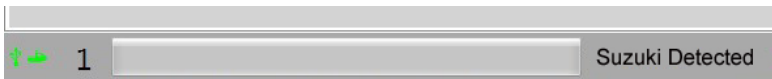
1. If you do not wish to run the engine while doing diagnostics (for example, to read and clear faults) you just need to turn on the ignition switch without starting the engine. Once the engine is in diagnostic mode, the ECU should continue to stay active

2. If you wish to do an active diagnostic session while the engine is running (for example, using the engine monitor function, or to drop a cylinder while running) please follow the instructions and warnings in the service manual for this vehicle, and make sure you supply cooling water to the engine per the service manual. Start the engine.

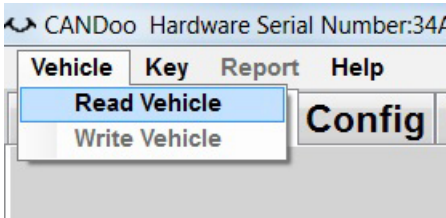
Starting the Diagnostic Session:

When the Candoopro application is running, and the ECU has been woken up, you are ready to start the diagnostic session.

Once the ECU is woken up, the Candoopro application should detect the Suzuki ECU, indicated by the icon on the lower left of the screen changing from red to green, and the status should change from "Looking for Vehicle", to "Suzuki Detected".



Once "Suzuki Detected" appears, go to the upper left of the screen, select "Vehicle", then "Read Vehicle".



The Candoopro system will read the data from the ECU. You are now ready to read and clear faults, view operating history, activate various functions available for that particular model.

General Faq's:

- CANDoo Professional checks for updates on startup, if there is an active internet connection.
- The hardware box must always be connected to the PC when you startup the program to enable the system to check for new updates.
- If you are using wireless and get out of range, it can cause CANDoo Professional to freeze up while trying to connect to the website on startup. We suggest disabling the wireless on your laptop if you are moving out of wireless range.
- Make sure you have a fully charged battery, failure to do so can cause data corruption!
- When you are done, always close the program first before disconnecting the USB cable to the Candoopro box. If you disconnect the USB cable before closing the program, the program will freeze and you may need to stop the program manually via the Task Manager to exit the program.