



Thank you for purchasing Candoopro! Please read the following information before using the system for the first time. If you have any questions about the use of the system, please contact us at Sales@candoopro.com, or visit our Forum at <http://forums.candoopro.com/>.

Quick Start Guide – Evinrude/Johnson Outboard Engines

Hardware and Cable Guide; what's included:

NOTE: If you ordered Evinrude capability as an add-on to an existing Marine version of Candoopro, you will only receive the appropriate cable to connect the Marine Main Diagnostic Cable to the Evinrude engine.

The Candoopro system setup for Evinrude includes the following parts:

The Vehicle Diagnostic System Box, which connects between your PC and the Outboard Engine



The USB Cable, which connects the Vehicle Diagnostic System Box to the PC:



The Marine Main diagnostic cable, which connects to the Vehicle Diagnostic System Box and to the Evinrude Diagnostic Adapter Cables:



The Evinrude Diagnostic Adapter Cable, which attaches between the Marine Main Cable and the Evinrude Engine Diagnostic Connector:



The Marine Main diagnostic cable is fastened to the Evinrude Diagnostic Adapter cables by carefully aligning the slot of the connected to the mating slot, then screwed hand tight



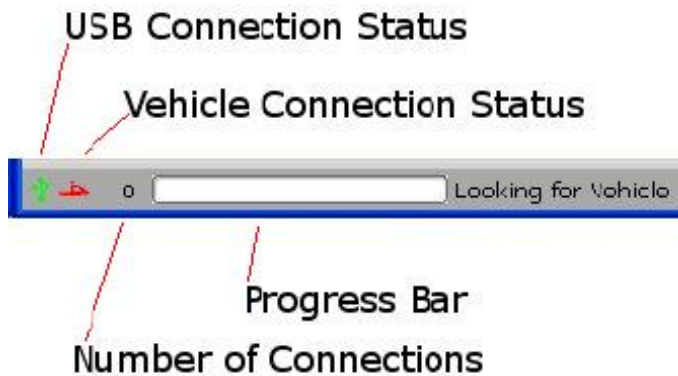
Getting Started- Loading Software and Starting up the Program:

First Time: (Internet Connection is REQUIRED)

- Install USB Drivers, by entering the following into your web browser
 - <http://www.candopro.com/candoinstall/driver/usbdriver.exe>
- Connect CANDoo Professional System to the PC with the provided USB Cable
- Install CANDoo Professional Software, by entering the following into your web browser
 - <http://www.candopro.com/candoinstall/CanDooPro.msi>
- Start CANDoo Professional by going to start menu and launching CANDoo Professional
 - When prompted to download the new update, you must select “YES”

Each Use: (Internet Connection is Optional)

- Connect CANDoo Professional System to the PC with the provided USB Cable
- Start CANDoo Professional by going to start menu and launching CANDoo Professional
- If you have a multi-brand version of software , select Evinrude
- Bottom left of the CANDoo Professional software shows the current status



-
- Connect the Candopro system to the Evinrude engine diagnostic connector.

Connecting to Evinrude Outboard Engines:

NOTE: Before connecting to the vehicle, please read the service manual for the particular model of Outboard Engine!

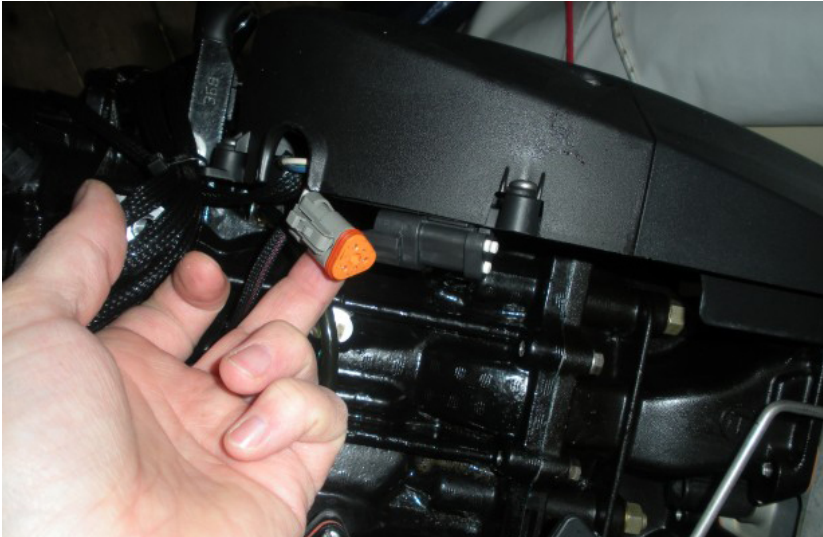
In general, starting a diagnostic session involves two steps:

1. Connecting the Candopro system to the outboard diagnostic connector
2. “Waking up” the engine ECU to enable the Candopro system to talk to the ECU

Connecting the Diagnostic Cable to the Outboard Engine:

1. Locate the diagnostic connector. The diagnostic connector is a three pin Deutsch connector, and has a protective cap on it. The cap is usually fastened to another part of the engine.

Example of the Diagnostic connector, after unfastening from the black plastic protective cap:



2. Remove the connector from the protective cap, and plug the Candoopro Evinrude adapter cable connector into the mating connector on the engine.
3. You are now ready to “wake up” the ECU and start a diagnostic session.

Waking up the ECU:

In order to initiate a diagnostic session, you need to “wake up” or turn on the ECU. This is done by turning on the ignition switch of the boat.

1. If you do not wish to run the engine while doing diagnostics (for example, to read and clear faults) you just need to turn on the ignition switch without starting the engine. Once the engine is in diagnostic mode, the ECU should continue to stay active
2. If you wish to do an active diagnostic session while the engine is running (for example, using the engine monitor function, or to drop a cylinder while running) please follow the instructions and warnings in the service manual for this vehicle, and make sure you supply cooling water to the engine per the service manual. Start the engine.

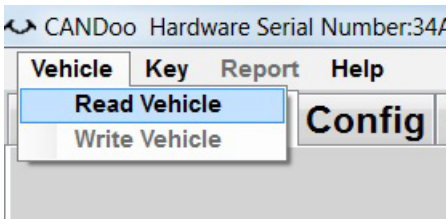
Starting the Diagnostic Session:

When the Candopro application is running, and the ECU has been woken up, you are ready to start the diagnostic session.

Once the ECU is woken up, the Candopro application should detect the Evinrude ECU, indicated by the icon on the lower left of the screen changing from red to green, and the status should change from “Looking for Vehicle”, to “Evinrude Detected”.



Once “Evinrude Detected” appears, go to the upper left of the screen, select “Vehicle”, then “Read Vehicle”.



The Candopro system will read the data from the ECU. You are now ready to read and clear faults, view operating history, activate various functions available for that particular model.

General Faq's:

- CANDoo Professional checks for updates on startup, if there is an active internet connection.
- The hardware box must always be connected to the PC when you startup the program to enable the system to check for new updates.
- If you are using wireless and get out of range, it can cause CANDoo Professional to freeze up while trying to connect to the website on startup. We suggest disabling the wireless on your laptop if you are moving out of wireless range.
- Make sure you have a fully charged battery, failure to do so can cause data corruption!
- When you are done, always close the program first before disconnecting the USB cable to the Candopro box. If you disconnect the USB cable before closing the program, the program will freeze and you may need to stop the program manually via the Task Manager to exit the program.